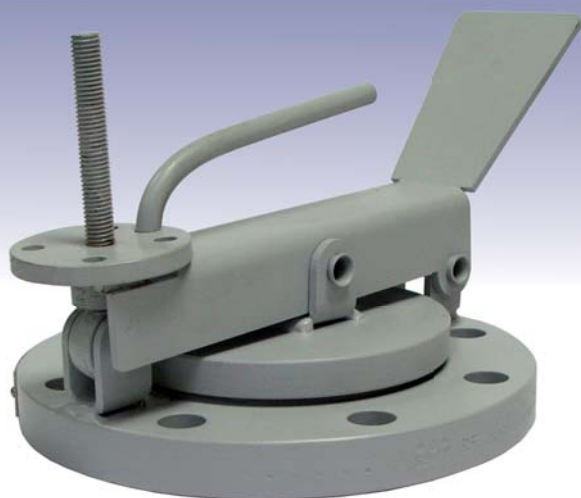


Gauge Hatches



Storage Tank Gauge Hatches for Level Measurement and Sampling

Application:

The Elmac Technologies® range of gauge hatches allow easy access to atmospheric liquid storage tanks for manual level measurement and sampling.

Principle of Operation

Provides tank access where manual level gauging, temperature measurement or sampling is required. The safety pedal allows the operator to open the gauge hatch whilst remaining 'hands free' to carry out required measuring. An optional lockable version is also available.

Materials & Options

Model	Options
Sizes (Nominal Bore)	4" 6" 8" 10" 12"
Process Connection	ANSI 150# (Standard) PN10 / PN16 Special (on request)
Materials	Aluminium Cast Iron Carbon Steel Stainless Steel
Insert	Nitrile Rubber PTFE
Pressure Setting	≤ 2.5psig (lockable version)

Benefits

- Robust construction to deal with regular use
- Sizes and materials to suit a range of applications
- Non-sparking feature, provided by the use of a PTFE or Nitrile rubber insert
- The cover is designed with a condensation rim. This encourages liquid drainage from the surface to reduce the possibility of freezing.
- Version with lockable handle and gas tight seal up to 2.5psig
- ATEX approved to directive 94/9/EC

Elmac Expertise

Elmac have been manufacturing protection equipment since 1948, and bring enhanced levels of flame and explosion protection to a diverse range of applications. Elmac Technologies® offers considerable technical leadership and using test facilities along with CFD capabilities, employs research teams renowned for developing solutions for the most challenging of industrial applications.

Customer Support

Elmac Technologies Limited

Greenfield, Flintshire, United Kingdom CH8 9DP

T +44 (0) 1352 717600 F +44 (0) 1352 717642 E sales@elmactechnologies.com

Issue No 02 (06/11)

All specifications are correct at time of print, are for guidance purposes only and subject to change without prior notice.

